



*jordanfishwick*

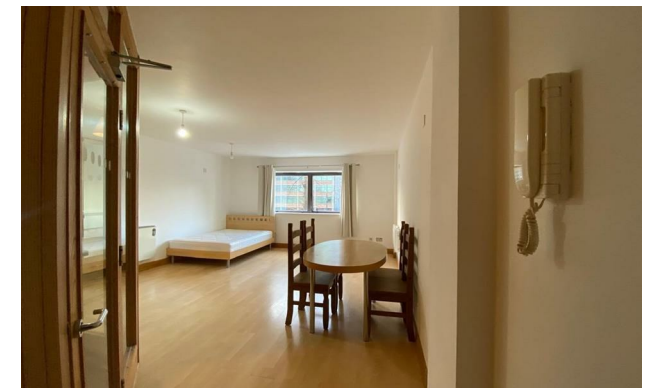
Seymour Grove  
Manchester





# Seymour Grove Manchester M16 0NB

£950 Per Calendar Month



## The Property

\*\*\*\*\* AVAILABLE NOW \*\*\*\*\* A spacious and well presented Studio Apartment furnished and with one secure off road parking space. Situated within a purpose built block of apartments this studio apartment is one not to be missed. The property offers a spacious and modern separate kitchen with integrated appliances. There is a large bathroom with shower over bath. The main studio area is large and would accommodate an individual or couple. There is one secure parking space to the front of the development. The property is fully electric and furnished.

\*\*\*\*\* To arrange a viewing please call 0161 860 4444

\*\*\*\*\*

## Directions

- Council Tax Band A - EPC B
- Studio Apartment
- Furnished
- Secure off road parking
- Close to Transport links & amenities
- Spacious throughout
- Available Now

Postcode - M16 0NB

EPC Rating - B

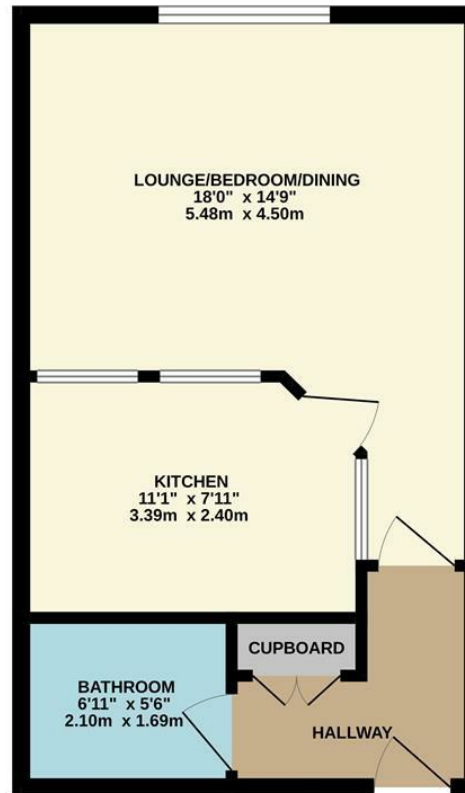
Floor Area - sq ft

Local Authority - Trafford

Council Tax - A



GROUND FLOOR  
373 sq.ft. (34.6 sq.m.) approx.



TOTAL FLOOR AREA : 373 sq.ft. (34.6 sq.m.) approx.

Whilst every attempt has been made to ensure the accuracy of the floorplan contained here, measurements of doors, windows, rooms and any other items are approximate and no responsibility is taken for any error, omission or mis-statement. This plan is for illustrative purposes only and should be used as such by any prospective purchaser. The services, systems and appliances shown have not been tested and no guarantee as to their operability or efficiency can be given.  
Made with Metropix ©2025



These particulars are believed to be accurate but they are not guaranteed and do not form a contract. Neither Jordan Fishwick nor the vendor or lessor accept any responsibility in respect of these particulars, which are not intended to be statements or representations of fact and any intending purchaser or lessee must satisfy himself by inspection or otherwise as to the correctness of each of the statements contained in these particulars. Any floorplans on this brochure are for illustrative purposes only and are not necessarily to scale.

Offices at: Offices at Chorlton, Didsbury, Disley, Hale, Glossop, Macclesfield, Manchester Deansgate, Manchester Whitworth Street, New Mills, Sale, Wilmslow and Withington

410-412 Barlow Moor Road, Chorlton, Manchester, M21

01618604444<sup>8AD</sup>

chorlton@jordanfishwick.co.uk  
www.jordanfishwick.co.uk